

SOUTH COAST HEAD START

Supporting families with young children in their quest for a brighter future.

2021-2022 ANNUAL REPORT



Table of Contents

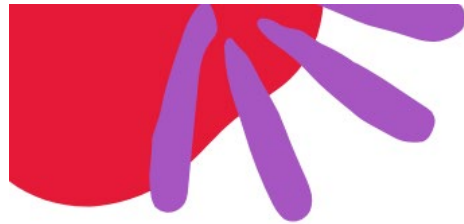
WHO WE ARE.....	3
LOCATIONS & SERVICES	4
ENROLLMENT & ELIGIBILITY	5
FAMILY ENGAGEMENT	7
SCHOOL READINESS & TRANSITIONS	8
HEALTH & WELLNESS	9
PROGRAM REVIEWS.....	9
PUBLIC & PRIVATE FUNDS	10
COMMUNITY ASSESSMENT SUMMARY	11
FOR MORE INFORMATION.....	12

WHO WE ARE

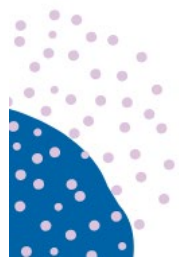
South Coast Head Start (SCHS) provides educational and family development services throughout Coos, Curry, and Coastal Douglas Counties. Program components are coordinated to provide high quality classroom environments and comprehensive services, including:

- EDUCATION
- HEALTH
- INCLUSION
- PARENT INVOLVEMENT
- SOCIAL SERVICES
- LEADERSHIP DEVELOPMENT

SCHS is a program of Oregon Coast Community Action (ORCCA). ORCCA employed 175 full and part time staff in the South Coast Head Start program throughout 2021-22. Over 41% of SCHS staff members are current or past Head Start parents.



**Head Start and
Early Head Start
programs build
strong
relationships as
the foundation of
early learning.**



#GetaHeadStart



LOCATIONS & SERVICES

SCHS provides center and home-based services with centers located in the following communities:



Each SCHS center is licensed with the Oregon Office of Childcare and participates in the Oregon Spark Quality Rating and Improvement System (QRIS). Classroom schedules and programming vary by community with options designed to best meet local needs. All options include education and family services home visits to partner with families in extending their own child's learning at home and support family needs and goals.



Full Day Classes - year-round

- 5 days/week
- 10 hours/day



School Day Classes - Sept-June

- 4 days/week
- 6.75 hours/day



Extended Day Classes - Sept-June or year-round

- 5 days/week
- 5-6 hours/day



Part Day Classes; Sept-May

- 4 days/week
- 3.5 hours/day

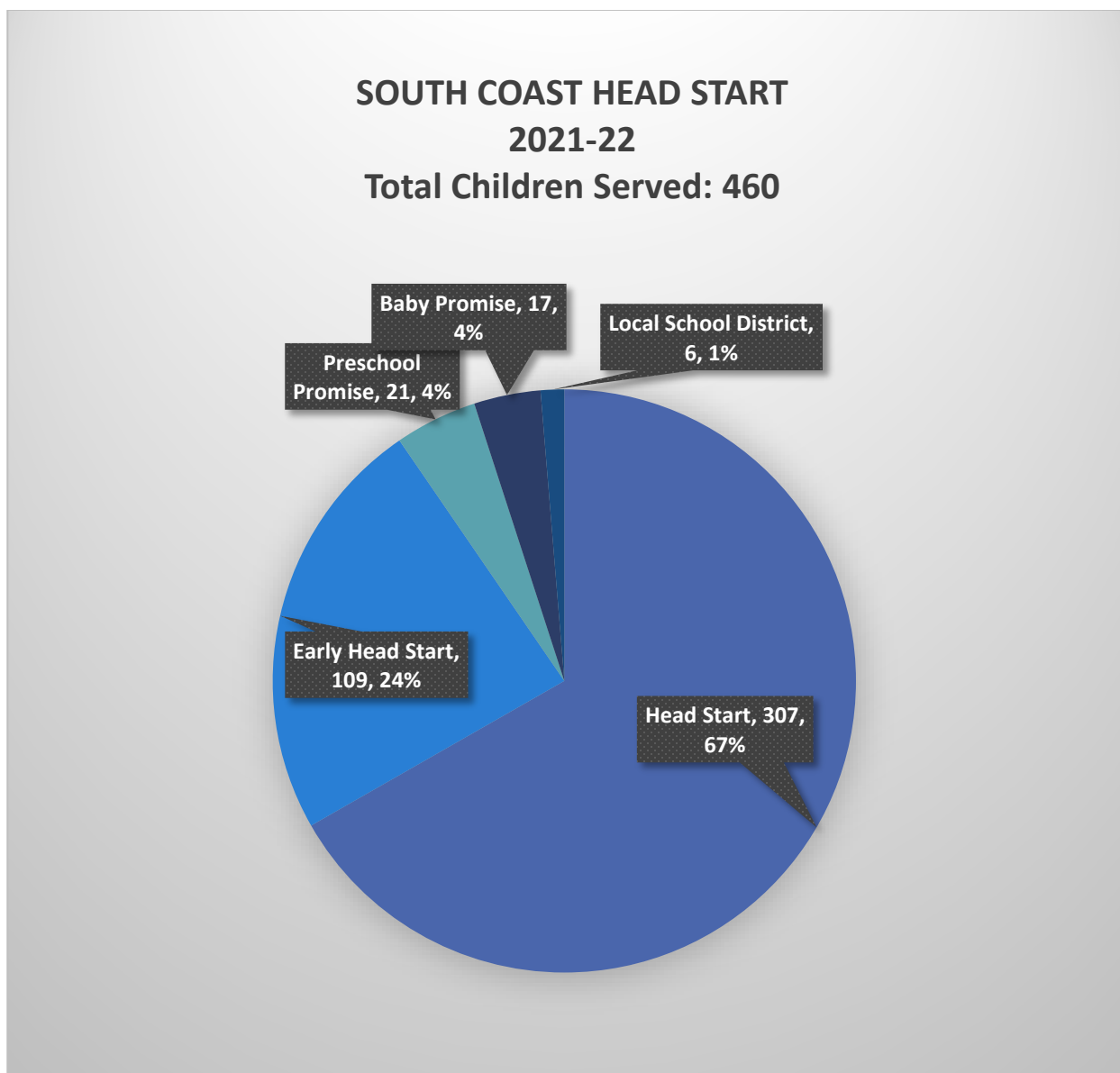


Home Based - year-round

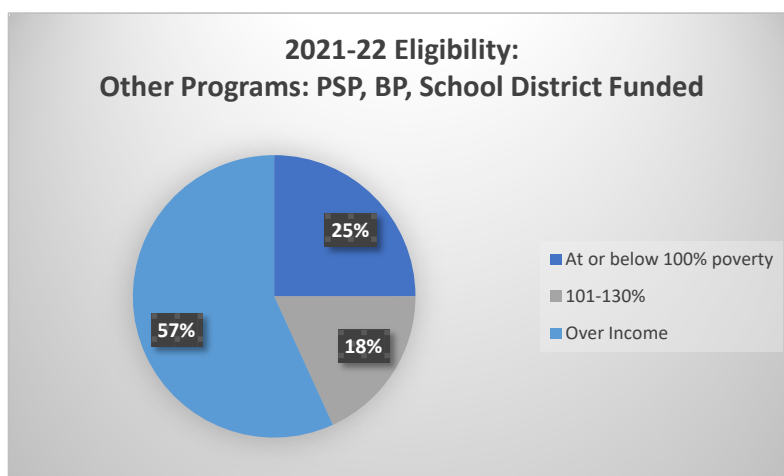
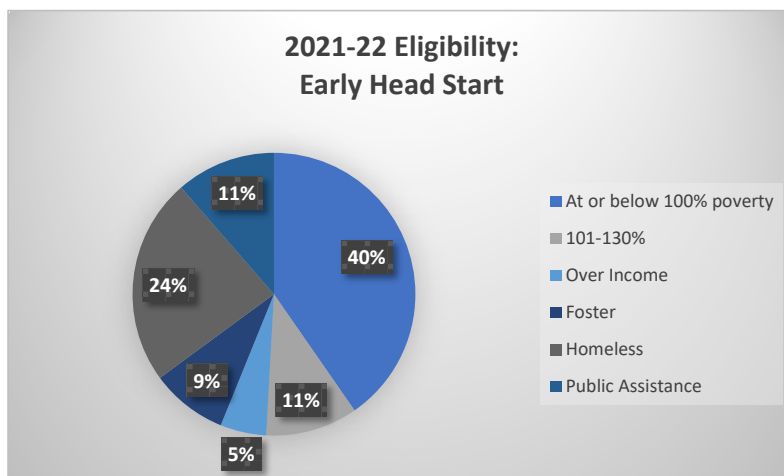
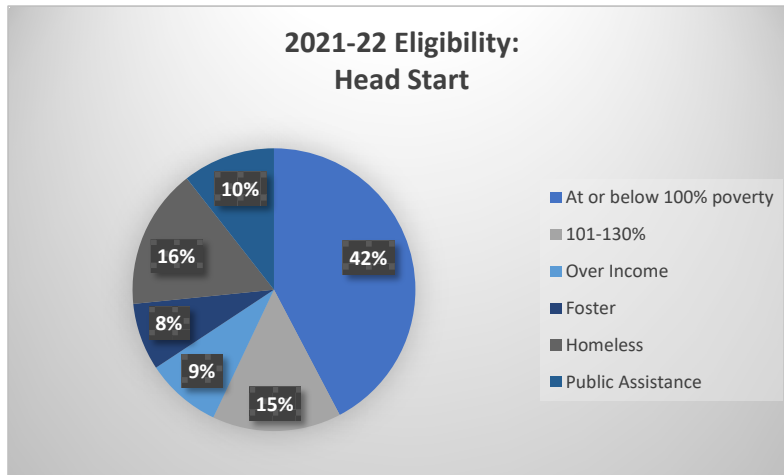
- Weekly Teacher Home Visits; year-round
- 2 Family Group Times/Month

ENROLLMENT & ELIGIBILITY

In the 2021-2022 program year the SCHS funded enrollment Head Start children ages 3-5 was 367. The program maintained an average monthly enrollment of 66% during the year, which was severely impacted by the COVID-19 pandemic. Early Head Start funded enrollment for children ages 0-3 and pregnant people was 94. The program maintained an average monthly enrollment of 83%. Other enrollment funding was also provided by Oregon Preschool Promise, Oregon Baby Promise, Local School Districts to provide an additional 36 enrollment slots with a focus on serving waitlisted children who did not meet Head Start eligibility requirements.



- Children whose family income is at or below 100% of federal poverty level OR receive public assistance (TANF, SSI, SNAP) are income-eligible for Head Start (HS)/Early Head Start (EHS) services.
- Children in foster care or experiencing homelessness are automatically eligible.
- Up to 35% of HS/EHS enrolled children may be from families whose incomes are 101-130% of federal poverty levels and an additional 10% may be over income.



FAMILY ENGAGEMENT

Parents are central to our work in our Head Start and Early Head Start programs. We welcome parents to participate and contribute to classroom activities, serve on local parent committees, represent classrooms on our program-wide Policy Council, and volunteer time with various program committees. SCHS also provides a variety of parenting education and connection opportunities for families throughout the year, including Circle of Security or Active Parenting workshops and Parent Cafés.

In the 2021-2022 program year:



135 Father-figures participated in child development experiences



47 parents served as Policy Council or local Parent Committee Leaders



155 families received crisis intervention services



157 parents participated in parenting education events, or training opportunities

SCHOOL READINESS & TRANSITIONS

“The Head Start Approach to School Readiness means that children are ready for school, families are ready to support their children’s learning, and schools are ready for children.”

South Coast Head Start teaching and home visiting staff utilized comprehensive curricula, individualized lesson planning and parent input to create learning environments and interactions that engaged and challenged children in our classrooms and home-based settings. In addition, staff and parent leaders focused on building and strengthening relationships and individualized transition strategies with schools to support school readiness.

Throughout the COVID-19 pandemic, staff have continued to focus on our core values: Parents are the first and most important teachers of their children. South Coast Head continued to employ dual-generational support for families to meet their emergent needs, connecting families with financial, health, and social service and mental health supports to support child and family school readiness.



Child to School

- Developmentally appropriate activities to support growth & development
- Ongoing individual child assessments to guide lesson planning and activities that support school readiness
- Spring field trips to local kindergarten classrooms



Family To School

- Local parents and staff attend parent-teacher organization meeting to learn about volunteer opportunities
- School Readiness parent meetings with local Kindergarten Teachers and parent mentors
- "Ready for School Files" to assist families in gathering school registration information
- SCHS Staff support Kindergarten "round-ups" and registration events



School to School

- School input into SCHS School Readiness Goals.
- Formal transition and information sharing agreements with each School District
- SCHS Teachers meet with KG Teachers annually
- Site and parent leaders attend local school board meetings to share SCHS program information

HEALTH & WELLNESS

Children who are healthy are ready to learn! SCHS includes comprehensive supports to help families ensure their children are up-to-date on medical and dental care. In the 2021-2022 program year, 256 families participated in medical or oral health education activities.



Children with
Accessible health
care at the end of
enrollment: 98%

Completed Medical
Exams during the
2021-22 program
year: 56%

Children with
Accessible dental
care at the end of
enrollment: 90%

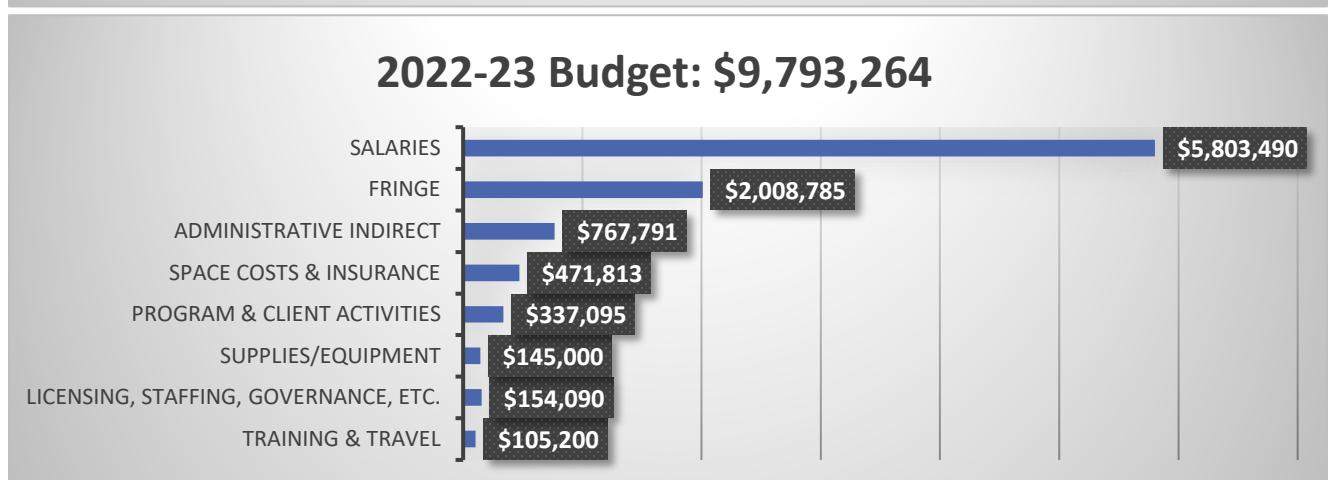
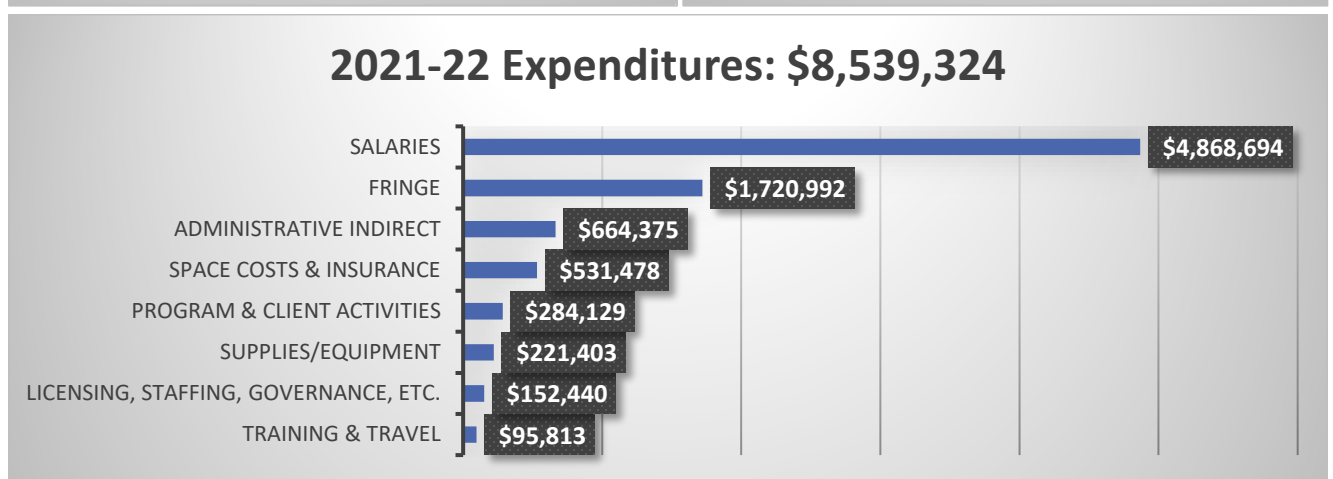
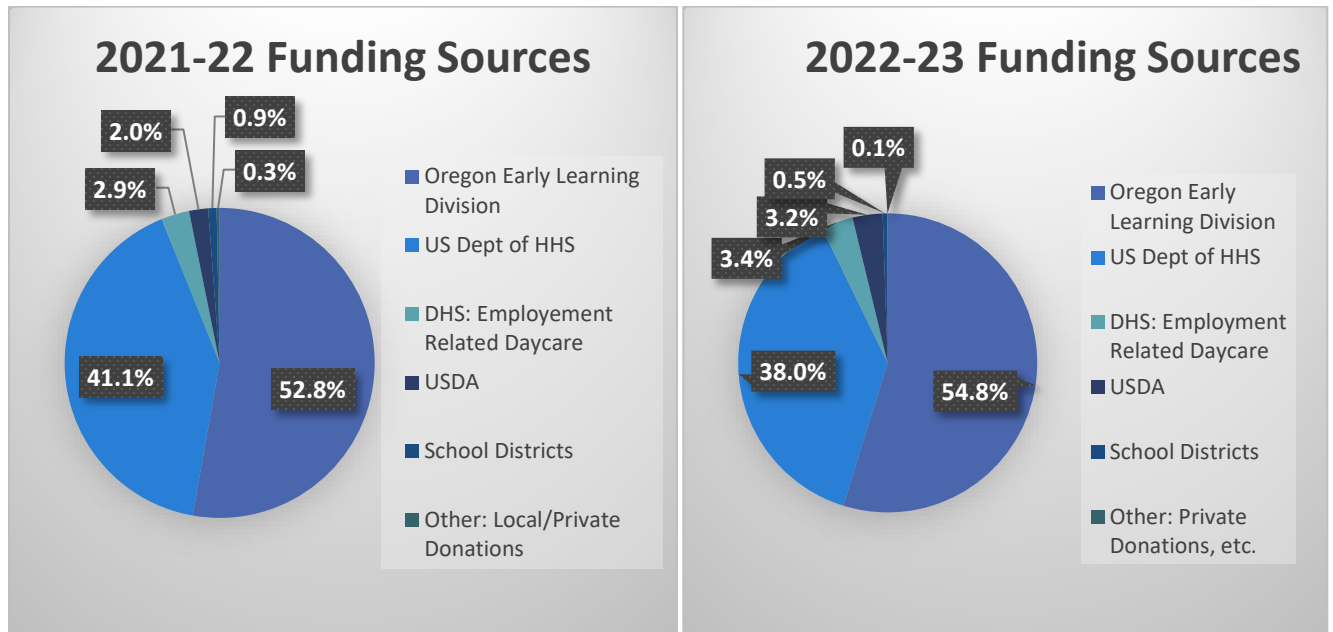
Completed Dental
Exams during the
2021-22 program
year: 68%

PROGRAM REVIEWS

SCHS receives regular reviews from the Office of Head Start. A Focus Area One (FA1) monitoring review was conducted in June 2020, with no deficiencies, areas of non-compliance, areas of concern found. An additional compliance review was conducted in May 2022 with a deficiency finding in the area of supervision. The SCHS program implemented corrective action and was found in compliance as of October 2022.

Program Review information can be found in the Early Childhood Learning and Knowledge Center's Agency Service Profiles at: <https://eclkc.ohs.acf.hhs.gov/federal-monitoring/report/agency-service-profile>.

PUBLIC & PRIVATE FUNDS



South Coast Head Start is a program of Oregon Coast Community Action. Audit reports can be found at www.orcca.us.

COMMUNITY ASSESSMENT SUMMARY

South Coast Head Start completed a comprehensive Community Needs Assessment in February 2022. The South Coast natural environment is consistently recognized as a strength, with beautiful scenery and outdoor recreation opportunities. When asked if their family experienced any positive changes during the pandemic, many families noted more family time. Other families noted job promotion or growth, ability to work from home, and connections to resources. Many families reported that Head Start/Early Head Start staff and services have been a key source of support during this time.

When asked about their biggest stressors in the past year, of 42 surveyed SCHS participant families, 81% identified the COVID-19 pandemic. This was followed by finances (40%), employment (30%), and mental health (28%). Multiple families also noted childcare and school closures as stressors.

Continued coordination of regional early learning programming and expansion strategies will be key to ensuring further intentional development of relevant early learning services for children and families. As the region responds to and recovers from pandemic conditions, continued positive relationships with community partners, including school districts, the South Coast Regional Early Learning (SCREL) Hub, Childcare Resource and Referral, CCO's, social services, and business partners will support data-sharing and meaningful support in planning and program development.

There is a continued need to focus on equitable access to comprehensive early learning and family development services. This is especially important for the most vulnerable children and families on the South Coast, who have been hard-hit by the COVID-19 pandemic. SCHS will work to address community needs such as safe, affordable childcare, health and wellness, and family connections and support in a coordinated effort to increase opportunities, provide high quality services, and help our region grow and thrive.

- Review program options, class sizes, and scheduling in each community to best meet the current and emergent needs of families.
- Realign resources to provide increased hours of service for eligible children and families. Explore facilities options for expanding hours for Head Start classes and plan for future Early Head Start expansion to better meet community needs.
- Work with community partners around early childhood workforce development. ECE expansion will require a large number of individuals to enter the ECE field, and training and development programs will be vital to future services and quality. Emphasis on retention strategies for current staff will also support continuity and ongoing quality improvements.
- Place focus on providing staff with relevant, timely professional development and ongoing support to ensure they have the tools and skills to provide quality, inclusive play-based learning opportunities to all ages and developmental levels.
- Build on existing partnership and coordination with South Coast ESD EI/ECSE to further develop services and supports for children with disabilities, with supports for families and classroom staff.
- Program focus on thoughtful, supportive transitions, individualization, and inclusion to fully engaging families in services and supporting each child's needs.
- Continue to explore how to further evolve Mental Health Consultation Services to meet the growing needs of children, families, and staff.
- Renew focus on kindergarten partnerships and relationships to support transitions to Kindergarten.

OREGON COAST COMMUNITY ACTION BOARD OF DIRECTORS

Tamie Kaufman, Board Chair
Scott Cooper, Vice Chair
Don Ford, Secretary
Megan Simms, Treasurer

ORCCA ADMINISTRATION

Drew Farmer, Executive Director
Alexis Barry, Program Operations Director
Angila Petris, Finance Director
Monique Vasquez, Human Resources Director



SOUTH COAST HEAD START LEADERSHIP STAFF

Wendi Baird, SCHS Director
Mickey Ludwig, Program Services
April Brunton-Rhodes, Child/Education Services
Krista Dunbar, Infant & Toddler Services

Hannah Holland, Inclusion Services
Janice Woody, Family Services
Corey Wampler, Health Services
Kendra McCasland, Fleet & Facilities

FOR MORE INFORMATION

South Coast Head Start
1855 Thomas Ave.
Coos Bay, OR 97420

Phone: (541) 888-3717
Fax: (541) 888-2877

Email: schs@orcca.us

Website: www.orcca.us/schs



Head Start is designed to ensure that all children – regardless of their family's income, race, or ethnic background – are able to enter kindergarten ready to learn. - Lucille Roybal-Allard